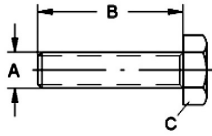
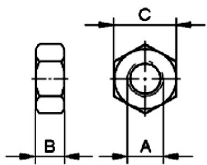
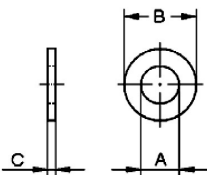


**Welding neck flanges EN 1092-1**
**Art.No**
**EUR**
**Art.No**
**EUR**
**Hexagon head screw  
ISO 4017**


DN	A	B	C			A2 - 70	
M10x40	M 10	40	17			554736	0,85
M10x50	M 10	50	17			554737	1,00
M12x55	M 12	55	19			554739	1,70
M12x70	M 12	70	19			554740	2,10
M16x65	M 16	65	24			554741	3,65
M16x75	M 16	75	24			554742	4,55
M16x90	M 16	90	24			554743	6,70
M16x100	M 16	100	24			554744	7,50
M20x80	M 20	80	30			554745	7,90
M20x100	M 20	100	30			554746	11,40
M20x110	M 20	110	30			554747	13,80
M24x90	M 24	90	36			554748	15,70
M24x110	M 24	110	36			554749	17,50
M27x110	M 27	110	41			554750	29,30
M30x120	M 30	120	46			554751	36,90
M33x130	M 33	130	50			554752	44,90

**Hexagon nut ISO 4032**


DN	A	B	C			A2 - 70	
M10	M 10	8	17			554835	0,23
M12	M 12	10	19			554838	0,30
M16	M 16	13	24			554840	0,90
M20	M 20	16	30			554842	1,45
M24	M 24	19	36			554843	2,75
M27	M 27	22	41			554844	4,95
M30	M 30	24	46			554845	6,30
M33	M 33	26	50			554846	9,25

**Washer ISO 7089**


DN	A	B	C			A2	
10	10,5	20	2			554935	0,11
12	13	24	2,5			554938	0,20
16	17	30	3			554940	0,40
20	21	37	3			554942	0,50
24	25	44	4			554943	0,85
27	28	50	4			554944	1,25
30	31	56	4			554945	1,35
33	34	60	5			554946	1,85